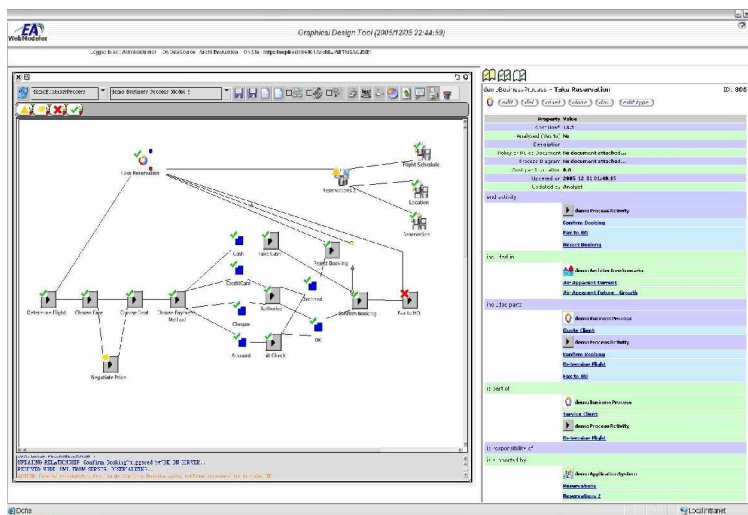


Agilense Releases Industry's First Web-Integrated Enterprise Architecture Graphical Modeling Solution

Agilense, Inc. (www.agilense.com), a leading provider of software to enable successful and lasting enterprise architecture implementation, today introduced EA WebModeler-Graphical Modeler, the industry's first Web-integrated enterprise architecture graphical modeling solution.

EA WebModeler-Graphical Modeler provides enterprise architects with the capability for graphical visualization and manipulation of models – until now, only available as a desktop case tool - in an integrated, Web-deployed solution. The new offering is based on the fundamental architectural design principle that enterprise architecture artifacts (content) should be distinct from how artifacts are presented and interacted with. This is the same principle that enables EA-WebModeler, Agilense's Web-based flagship product, to rapidly deliver new and useful interfaces to architects whose analytical needs are constantly being refined as the enterprise architecture practice matures.

Competitive modeling products do not follow the principle of separating content from presentation, resulting in proprietary repositories; an inability to share information; and the need for new vendor development each time a new capability is desired. "Agilense is introducing a significant new level of capability into the EA market," said Stephen K. Hunter, CTO, Agilense, Inc. "We recognize that the EA market has existing case tools, and we support interoperability of these technologies with our repository. However, we were receiving strong signals that the market was dissatisfied with the current graphical modeling tool offerings.



"Once the decision was made to deliver our own graphical modeling solution, we decided that it not only had to offer capabilities above and beyond existing tools but also provide the advantages of being Web-deployed."

Just as EA WebModeler leads the market in ease of use, flexibility, and global accessibility, EA WebModeler-Graphical Modeler provides those same benefits through capabilities which include:

Deployment Anywhere – Fully integrated with EA WebModeler's Web-deployed infrastructure, Graphical Modeler is instantly accessible on a global basis from any Web browser. This allows for greater collaboration and alignment between IT and non-IT functions.

Flexible Custom Modeling – Graphical Modeler not only provides graphical modeling and metamodeling capability, it enables clients to implement custom modeling notations. Recent examples include modeling standards in Service Oriented Architecture (SOA), Value-Chain Modeling (VCM), and Whittle-Myrick Enterprise Business Architecture notation (EBA).

Graphical Gap Analysis – EA is about managing enterprise change. Graphical Modeler provides graphical depiction of current and future architecture scenarios and, the delta changes between those scenarios.

For more information about the availability of EA WebModeler-Graphical Modeler, call (800) 803-9840 or email info@agilense.com. For more information about Agilense and its products and services, visit www.agilense.com.

About Agilense, Inc.

Agilense, Inc. is a global provider of software that enables organizations to visualize and optimize alignment of strategy, process, and technology. As a result, clients save time, cut costs, and increase the efficiency and effectiveness of critical business and IT activities thus delivering maximum value to the business.

###